

Paleoclimate & Trees

Name: _____

Earth Science

Date: _____ Hr: _____

Use the WebRangers: Dendrochronology link:

1. Dendro = _____ Chronology = _____

In your own words, define dendrochronology:

2. How many rings do trees produce each year? _____. Describe each and when each forms.

3. Describe conditions that produce narrow band growth.

4. After clicking "Try It", how many years (rings) are shown? _____ years.

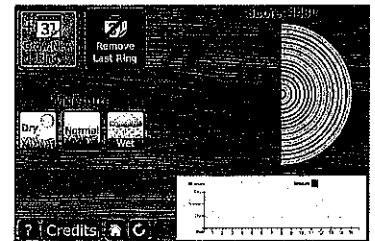
5. How old was the artifact you tested using dendrochronology? _____

Use the "Dendrochronology-Tree Ring" link:

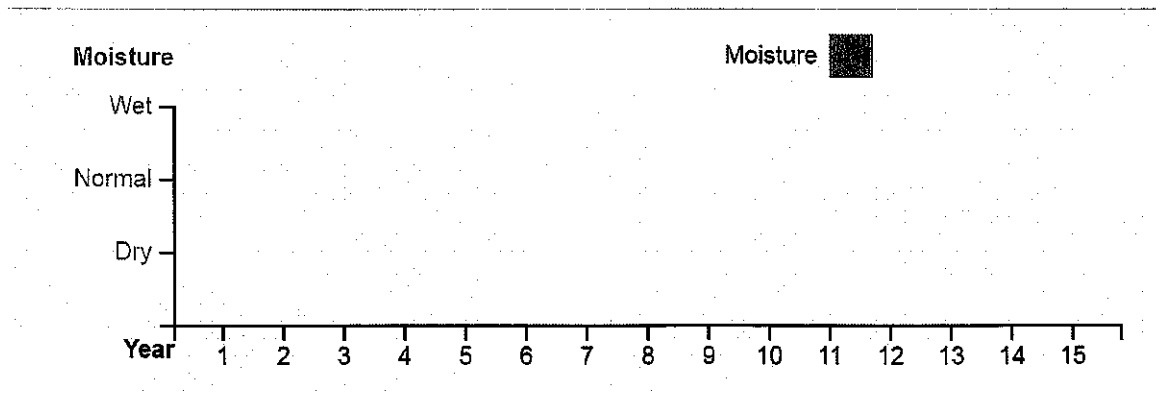
LEVEL 1-MOISTURE

6. Study the tree ring cross-section as it appears on the computer screen. Figure out the correct moisture conditions (dry, normal, wet) needed to grow each tree ring.

7. Fill in your data below in the chart AND on the graph



| Year | Moisture | Year | Moisture | Year | Moisture |
|------|----------|------|----------|------|----------|
| 1 | | 6 | | 11 | |
| 2 | | 7 | | 12 | |
| 3 | | 8 | | 13 | |
| 4 | | 9 | | 14 | |
| 5 | | 10 | | 15 | |



Click the HOME button to return to the level screen.

Paleoclimate & Trees

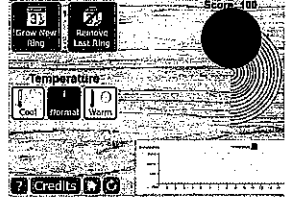
Name: _____

Earth Science

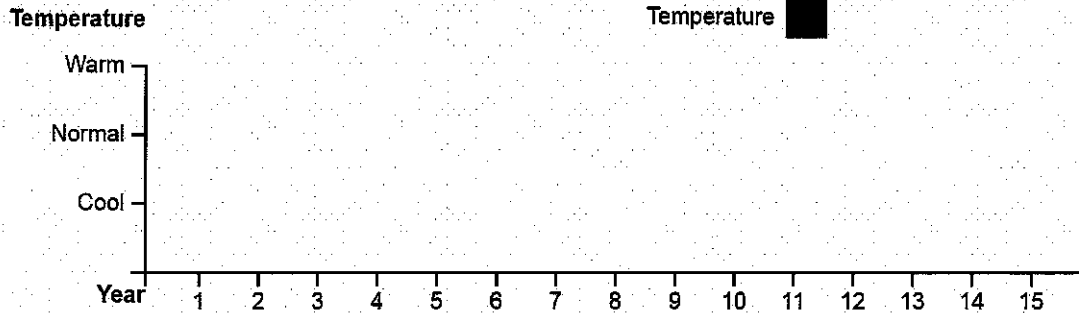
Date: _____ Hr: _____

LEVEL 2-TEMPERATURE

1. Figure out the correct temperature conditions (cool, normal, warm) needed to grow each tree ring.
2. Fill in your data below in the chart AND on the graph



| Year | Temperature | Year | Temperature | Year | Temperature |
|------|-------------|------|-------------|------|-------------|
| 1 | | 6 | | 11 | |
| 2 | | 7 | | 12 | |
| 3 | | 8 | | 13 | |
| 4 | | 9 | | 14 | |
| 5 | | 10 | | 15 | |



LEVEL 3-TEMPERATURE

1. Figure out the correct temperature combination needed to grow each tree ring.
2. Fill in your data below in the chart AND on the graph

| Yr | Temp | Moisture | Yr | Temp | Moisture | Yr | Temp | Moisture |
|----|------|----------|----|------|----------|----|------|----------|
| 1 | | | 6 | | | 11 | | |
| 2 | | | 7 | | | 12 | | |
| 3 | | | 8 | | | 13 | | |
| 4 | | | 9 | | | 14 | | |
| 5 | | | 10 | | | 15 | | |

